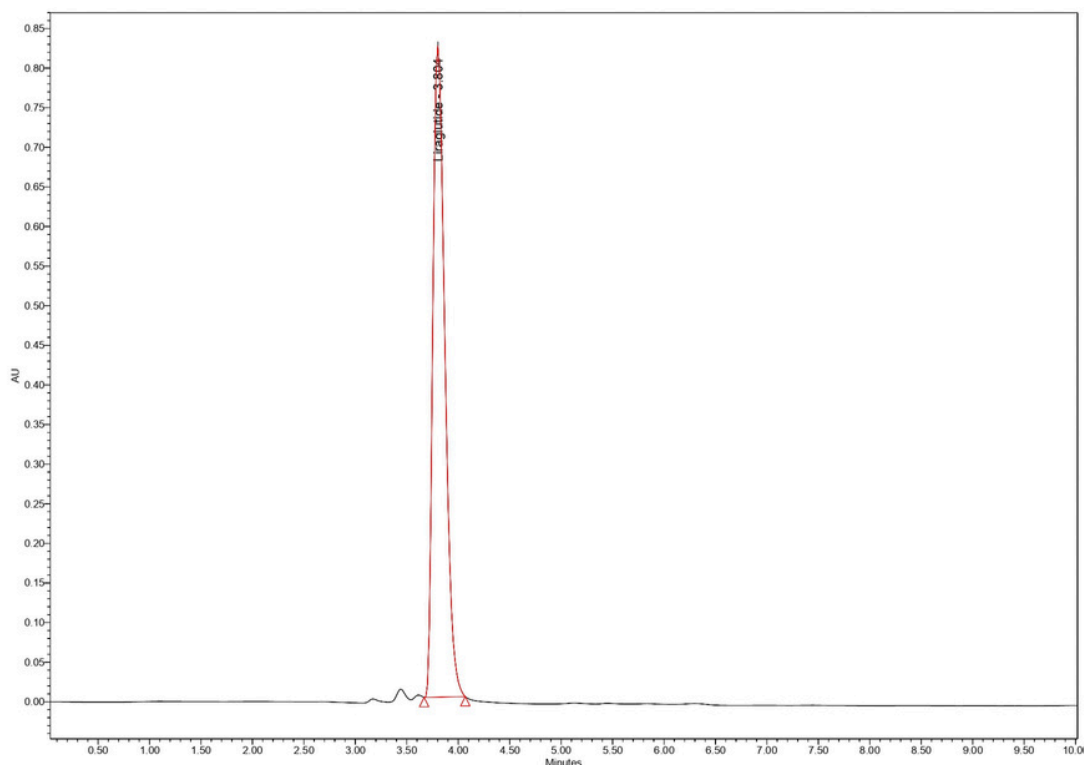


## Liraglutide

RSolv<sup>®</sup> Capella C18, 5 $\mu$ m, 250 X 4.6 mm



### Test Condition

**Column:** RSolv<sup>®</sup> Capella C18, 5 $\mu$ m, 250 X 4.6 mm

**Part No.:** RS1-3B050-25046

**Flow Rate:** 1.0 mL/min

**Injection volume:** 20  $\mu$ l

**Detection:** PDA 280 nm

**Mobile Phase:** Phosphate buffer pH 4.0:  
ACN (pH 4.0) (30:70% v/v)

**Column Temperature:** 30°C

**Sample Temperature:** Ambient

### Discussion

The isocratic mobile phase was Phosphate buffer pH 4.0: ACN (pH 4.0) (30:70% v/v) at a flow rate of 1.0 mL/min, and injection run time is 10 minutes. Analyte determination was performed using a PDA detector set at 280 nm. Sample was prepared with methanol and the volume injected was 20  $\mu$ l.

The chromatographic analysis detected a significant peak at 3.804 minutes, representing Liraglutide with a tailing factor of 1.38, indicating a symmetrical peak. Theoretical plates for Liraglutide were calculated at 4944, indicating good chromatographic efficiency

For more information, Contact us at